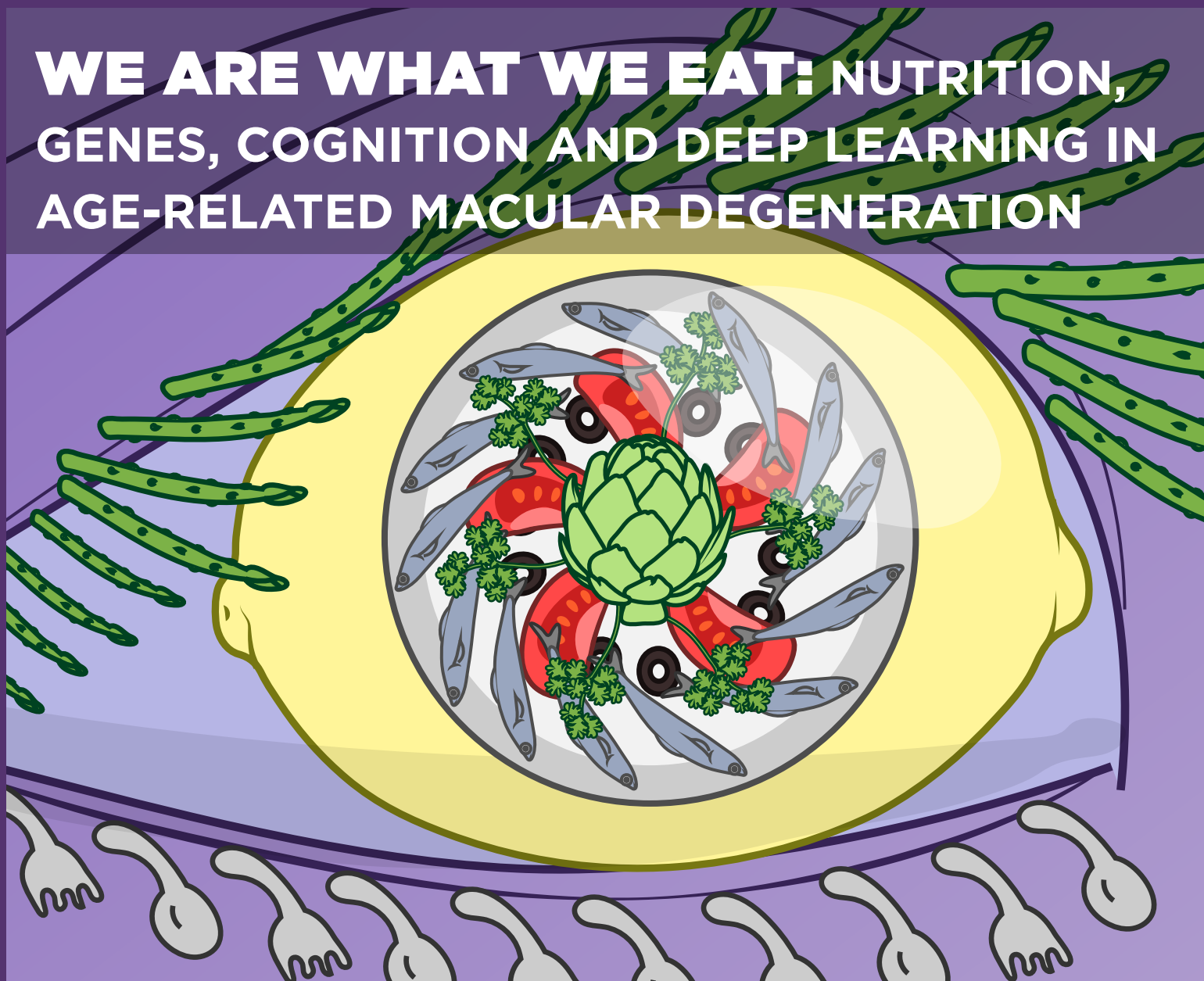


# WE ARE WHAT WE EAT: NUTRITION, GENES, COGNITION AND DEEP LEARNING IN AGE-RELATED MACULAR DEGENERATION



## EMILY CHEW, M.D.

DIRECTOR, DIVISION OF EPIDEMIOLOGY AND CLINICAL APPLICATIONS, NEI

### DECEMBER 11, 2019

### 3-4 PM

### LIPSETT AMPHITHEATER

CLINICAL CENTER, NATIONAL INSTITUTES OF HEALTH

VISIT THE WEDNESDAY AFTERNOON LECTURES SERIES WEBSITE AT [HTTPS://OIR.NIH.GOV/WALS](https://oir.nih.gov/wals)

FOR INFORMATION OR ACCOMMODATIONS CALL JACQUELINE ROBERTS AT 301-594-6747 OR [ROBERTSJ@OD.NIH.GOV](mailto:ROBERTSJ@OD.NIH.GOV)

SIGN LANGUAGE INTERPRETERS WILL BE PROVIDED. INDIVIDUALS WITH DISABILITIES WHO NEED ACCOMMODATIONS TO PARTICIPATE IN THE LECTURE SHOULD CALL 301-594-6747, FIVE DAYS AHEAD OR CONTACT THE FEDERAL RELAY SERVICE (TTY) 1-800-877-8339.



Clinical Center